

Watchdog Tracker LT “Quick-Start” Setup Guide

Package Contains:



Tracker LT Monitor Unit

Includes monitor unit with connection harness cable attached and antenna.

Adapter (for 3” riser pipe installations)

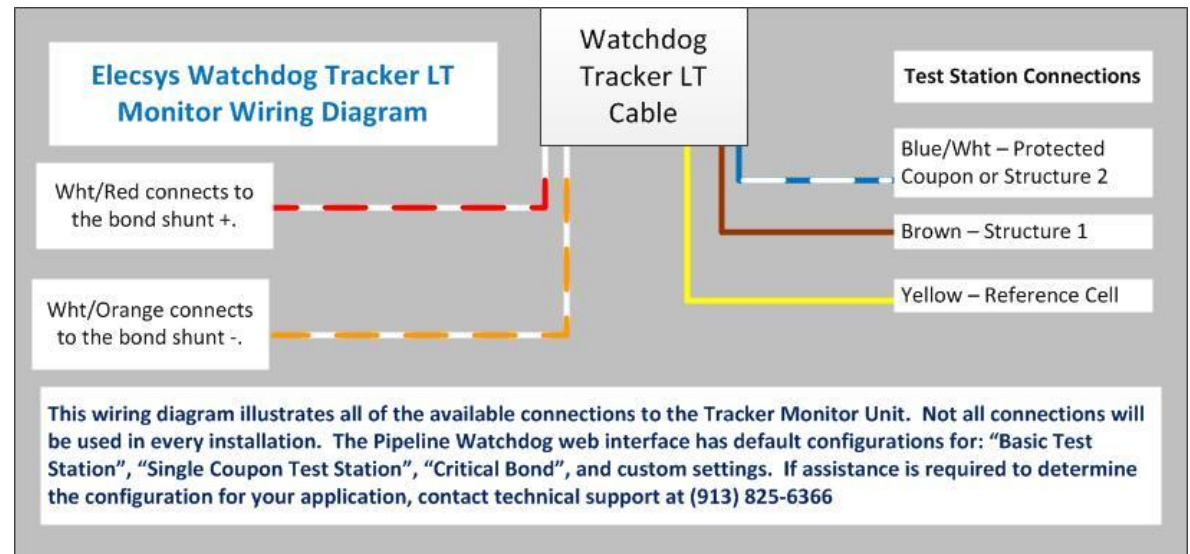


*Please inspect package contents and immediately notify Elecsys Technical Support at (913) 825-6366 or email support@watchdogcp.com if there are any discrepancies.

Prior to beginning installation of this product, locate the serial number of the device on the label attached to the back of the enclosure and record it for use in setting up the website.

Ser. # _____

Tracker LT Wiring Diagram



Basic Testpoint Monitoring: Connect the brown wire to the pipeline lead, connect the yellow wire to the reference electrode lead.

Single Coupon (instant-off) Test Station Monitoring: Connect brown wire to the pipeline lead, yellow wire to the reference electrode lead, and blue/white wire to the coupon lead (Tracker LT supports single coupon connection only).

Critical Bond Monitoring: Connect the red/white lead to the “shunt +” connection, and connect the orange/white wire to the “shunt –” connection. If structure-to-soil connections are desired, connect the brown wire to the critical structure lead, connect the yellow wire to the reference electrode lead, and connect the blue/white wire to the second structure lead.

Activation and LCD Display

1. To activate the Tracker Monitor Unit, Press and hold the button on the side of the unit for approximately 4 seconds until the “Power” LED turns on solid then release to initialize communication to the website. While initializing communication with the cellular network, the LED will flash in a steady “On/Off” sequence. The LED will turn off when the initial communication is completed. When communication is made with the website, the website will send the latest configuration to the unit.
2. The Tracker unit will obtain measurements for all of the configured channels and forward the data to the website.
3. The Tracker unit will automatically go into “sleep” mode until the next measurement cycle.

Watchdog Tracker LT Website Configuration

Select & setup unit configuration

1. Locate the serial number from the label on the back of the Watchdog Tracker unit.
2. Logon to Pipeline Watchdog
<https://secure.pipelinewatchdog.com>
3. Select the “My Network” menu and click on “Search the Network”.
4. On the search page, select the “Serial Number” option in the “Search By” field.
5. Input the serial number for your unit in the “Criteria” field and click on “Search” to locate the site for the unit.
6. Click “Go To Site” for the unit to access the site page. *If the unit is not found contact **Technical Support at 913-825-6366 or email support@watchdogcp.com** for assistance before proceeding.
7. On the “Site Page” click “Configure Unit” on the right side of the screen in the “Unit Information” section.
8. Select the field application setting appropriate for the site at which the unit will be deployed.
9. Review and change the default channel activation and alarm settings if necessary to match your application.
10. Review and change the Sampling, Logging, and Reporting Time intervals if necessary.
11. Click on “Send Configuration” to queue the configuration to download to the unit when it is activated.
12. This completes the configuration selection. If a configuration change is required at any time, repeat these steps and send a new configuration to the device. Configurations are transmitted to the unit on the next communication from the unit.

Watchdog Tracker LT Field Installation

The Tracker LT is sent from the factory with the connection cable routed through a cordgrip on the back/bottom of the enclosure. There is an access hole on the side of the unit used for routing the cord when it is necessary to mount the unit directly post, junction box, etc. If re-routing the cable, use the cordgrip on the side hole, and cap the bottom hole with the plug from the side hole.

Note: When mounting the Tracker, use the included “riser pipe adapter” for installation on the top of the riser pipe, or use the mounting holes on the case flanges for mounting to a durable surface.

Mounting the Tracker to a PVC marker pole

1. Thread the connection cable through the hole in the base of the adapter.
2. Secure the adapter to the monitoring unit using the supplied nuts and bolts.
3. Wire the unit according to the wiring diagram in the next column for the appropriate field application (test station, bond, etc.).
4. Secure the unit to the riser pipe using screws, or bolts.

Mounting to a post, utility pole, or junction box

1. Re-route the connection cable through the side hole, using the cordgrip, as described above if necessary, and plug the hole on the bottom of the unit.
2. Secure the unit to the pole using 5/8” wood screws with washers (for wooden posts), or 5/8” self-tapping metal screws with washers (for metal poles and junction boxes. The mounting hardware is not supplied with the Tracker unit.
3. Wire the unit according to the wiring diagram in the next column for the appropriate field application (test station, bond, etc.).

Watchdog Tracker LT Connection

Connecting the Tracker to the measurement points at the site

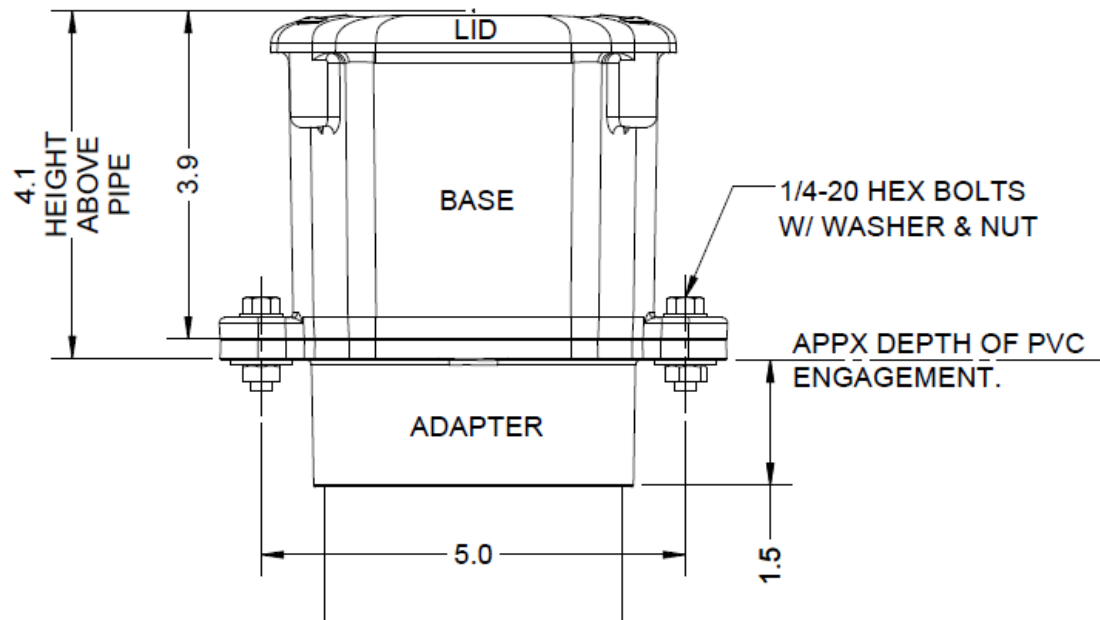
1. Connect to the terminals at the measurement points using standard crimp-on ring or spade connectors (not supplied). If connecting to bare wire leads use in-line splices or wire nuts.
2. Connect leads from the connection harness as appropriate for the field application using the following wiring guide:

Wire Color	Connects to:
Brown	Pipe Structure
Yellow	Reference Cell
Blue/Wht	Protected Coupon* or Structure 2
Wht/Red	Bond Shunt+
Wht/Yellow	Bond Shunt-

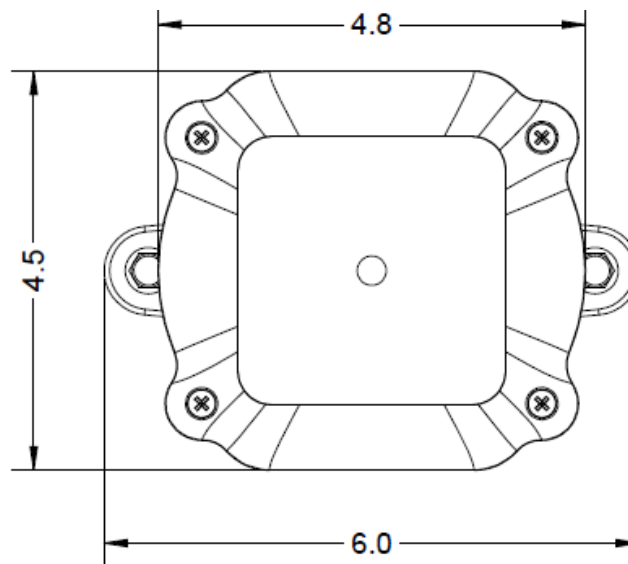
**If “On Potential” and “Off Potential” is to be measured, the “Protection On/Off” switch in the test station must be set to the “Off” position.*

Illustrated wiring diagram is on the previous page.

Note: Not all wires are used in all applications. “Tape off” any unused wires to insulate from interference or shorting.



Mechanical Drawing, Tracker LT Enclosure with Riser Pipe Adapter – Side View



Mechanical Drawing, Tracker LT Enclosure– Top View