



DAIRYLAND ELECTRICAL INDUSTRIES

ISOLATE. GROUND. PROTECT.

The Polarization Cell Replacement (PCRH) Installation Instructions

READ ENTIRE DOCUMENT BEFORE INSTALLING

Introduction

The Polarization Cell Replacement for use in Hazardous Locations (PCRH) is a solid-state DC isolation/AC grounding (or coupling) device designed for use in conjunction with cathodically protected equipment located in Class I, Division 1 hazardous (classified) locations. (The less costly PCR is normally used for Class I, Division 2 and non-hazardous locations.) The PCRH is suitable for: (1) AC voltage mitigation, (2) over-voltage protection of insulated joints and similar structures and equipment, (3) DC isolation and AC grounding of cathodically protected structures.

The PCRH can be used in a variety of applications, each of which require specific installation guidelines. These installation instructions cover the following common applications.

- DC isolation/AC grounding of cathodically protected structures containing electrical equipment.
- Over-Voltage protection of insulated joints.
- AC voltage mitigation.

Some applications listed may not apply in some counties due to different codes and practices. If your application is not covered by these installation instructions, contact Dairyland. "Application Notes" for most applications are also available on the Dairyland website.

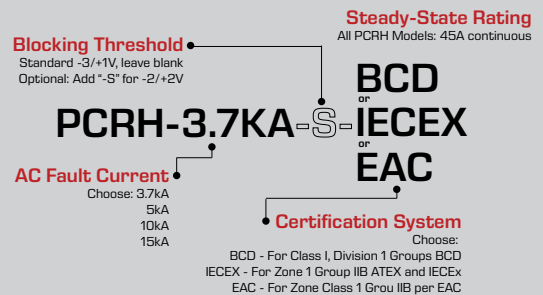
General Installation Instructions

These general instructions apply to all applications. For specific installation instructions, refer to the figure numbers that apply to the application as noted on the first page.

Warning

Due to DC voltage, stray sources, or especially induced AC voltage on cathodically protected structures, personnel may be exposed to unsafe voltage. Measure for the presence of voltage before contacting the structure. NACE standard practice recommends caution and remediation when voltage approaches 15V between contact points. Sparking and current flow may occur when connecting or disconnecting decouplers or over-voltage protectors. Assure that this does not occur in hazardous locations where gases or vapors may be present. All necessary precautions must be taken to avoid unsafe worker conditions, including arcing, in accordance with applicable

Model Number Chart



Note: For EAC products see separate EAC installation manual available at www.dairyland.com

Certifications - Class and Division System: United States and Canada

The PCRH has been tested by Nationally Recognized Testing Laboratories (NRTLs) for compliance to independent standards in its operation, ratings, and construction. This includes compliance to standards for:

Safety Grounding

UL (United States) and C-UL (Canada) listing for:
NFPA 70 (US National Electric Code - NEC), Article 250.2 and required in 250.4 (A)(5), CSA C22.1-12, 10-500, 10-806 and CSA C22.2 No. 0.4-04 (2009)

Over-voltage protection from lightning per ANSI C62.11

Blocking Cathodic Protection Current

Suitable for the isolation of objectionable DC current from cathodically protected systems to ground as defined in NFPA 70, Article 250.6(E)

Hazardous Location Use

The PCRH has been certified for use in Class I, Division 1 and 2, Groups B, C, D by UL and C-UL, according to:

- NFPA 70 (U.S. National Electrical Code) sections 500-505
- UL 1203
- CSA C22.2 No.30-M1986 (R2012)

Enclosure Rating: NEMA 4X

Temperature Range: -45°C to +65°C

Certifications - Zone System: Europe, International

The PCRH is certified to the ATEX Directive and IECEx for Zone 1 use for Gas Group IIB under protection method "d". The ambient temperature range is -20°C to +60°C. The standards used in the evaluation are: EN60079-0:2009; EN60079-1:2007; IEC 60079-0, 5th Edition; IEC 60079-1, 6th Edition.

industry and/or company-required practices.

Mounting

Mount the PCRH so that the total length of conductor to the connection points will be as short as possible if the PCRH is being used to provide over-voltage from lightning. All conductors have inductance which will cause a significant voltage per unit of conductor length when subject to lightning surge current. To minimize the voltage developed between the connection points, install the PCRH as close as practical to the required connection points and cut the conductor to the shortest possible length during installation. For most insulated joint applications the PCRH can, and should, be installed with about 6 inches (\approx 150 mm) of lead. Conductors typically develop 1-3 kV/ft. (approx. 3-10 kV/ meter) of length; hence, the reason leads should be kept as short as possible. Conductor length is not critical for limiting voltage due to 50 Hz or 60 Hz current.

Note: The PCRH enclosure is connected to the positive (+) terminal internally with a bonding jumper. Therefore, when installing, make sure that there is no electrical connection between the enclosure and the negative (-) conductor. Separate grounding of the enclosure is not required when the positive lead is connected to ground.

Mounting Accessories

Numerous mounting accessories are available from Dairyland to aid in the proper installation of the PCRH. Full details and complete installation instructions are available on the Dairyland website here: [Dairyland Accessories](#).

Specific Installation Guidance

The Dairyland website contains detailed information on the installation methods specific to a given application. For wiring diagrams and/or application guidance, see [Dairyland Applications](#).

Polarity

If the PCRH purchased has asymmetrical blocking characteristics and it is being connected between a cathodically protected structure and ground, connect the negative terminal of the PCRH to the cathodically protected structure and the positive terminal to ground. If being connected between two different cathodically protected systems, attach the negative terminal to the more negative structure and the positive terminal to the less negative structure, keeping in mind that the positive terminal is normally bonded internally to the metallic enclosure. Consider if the PCRH enclosure mounting could affect the cathodic protection system. The bottom of the nameplate, which is located just above the two conductors, shows the polarity of each conductor.

Conductor Connections

Conductors Furnished by Dairyland

If conductors have been furnished with the PCRH, they may or may not already be connected, depending on the type of conductor connection ordered and the conductor length.

Axial connected conductors will normally come preinstalled to the PCRH, unless conductors are longer than about 15' (\approx 4.5

meters). If not installed, rotate the entire cable with the pre-crimped connector onto the threaded bushing stud until the connector is up to the brass jam nut before attaching the other end of the conductor. Then hold the connector while tightening the jam nut firmly against the end of the connector. (Do not exert torque on the bushing stud with respect to the bushing body during this procedure.) Slide the heat shrink sleeve over the jam nut and the insulating part of the bushing, and shrink in place. Tools required include vise-grips or channel locks to hold the connector, a wrench for a 1/2" nut (a 3/4" open-end wrench or equivalent), and a heat source to shrink the heat shrink sleeve.

To install right angle connected conductors, install with one jam nut on each side of the cable terminal lug per instructions provided with the kit. Securely hold one nut while tightening the other nut. Tools required include two wrenches for a 1/2" nut.

Conductors User Furnished

If conductors and terminals are user furnished, a terminal with one hole that accommodates a 1/2" diameter stud will be required. Terminals are available to make a right angle or a 45° angled connection to the bushing stud. Connect as described above. Tools required include two wrenches for a 1/2" nut.

ATEX/IECEX Comments

- The device shall be placed into service in accordance with the ratings and limitations stated in the installation and operating instructions.


- Warning: Do not open when an explosive atmosphere may be present.

- No ongoing maintenance is required, as the device is designed to be maintenance free, and is of solid-state construction with no moving, wearing or serviceable parts.

- Regular testing of the device is not required. Users who desire to verify the operating condition of the device should refer to the section entitled "Field Testing." Observe all safety precautions described, in addition to industry or company safety practices.

- This equipment complies with the standards listed on page 1 per certificate numbers: DEMKO 14 ATEX7391121X and IECEx UL 14.0027X

- This equipment is marked:

 II 2 G Ex d IIB T6 -20°C ≤ Ta ≤ 60°C Gb
CE 0539

Contact Dairyland Electrical Industries for information on the dimensions of the flameproof joints.

Field Testing

Before installation, the following measurements are suggested to confirm that the steady-state conditions imposed on the PCR will be within its ratings.

1. Measure the open-circuit DC voltage between the PCRH

connection points with a multimeter. The open-circuit DC voltage measured should be within the DC blocking voltage rating of the model selected (i.e., normally -3.0 V/+1.0 V or +/-2.0 V, unless a custom version has been ordered).

2. Measure the steady-state short-circuit AC-RMS current between the PCRH connection points with a clamp-on ammeter. The short-circuit AC-RMS steady-state current measured should be less than the steady-state AC current rating of the PCR model ordered.

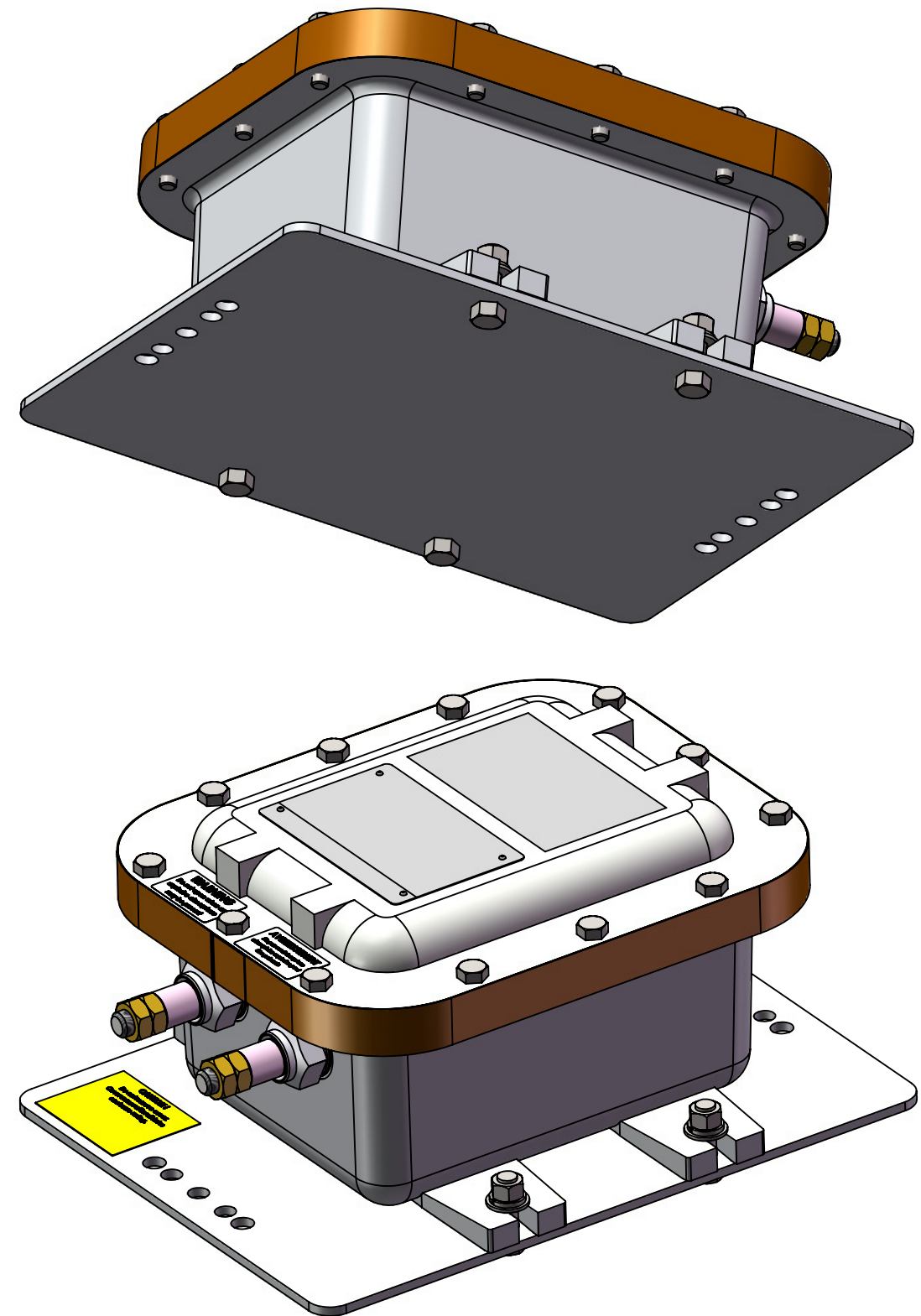
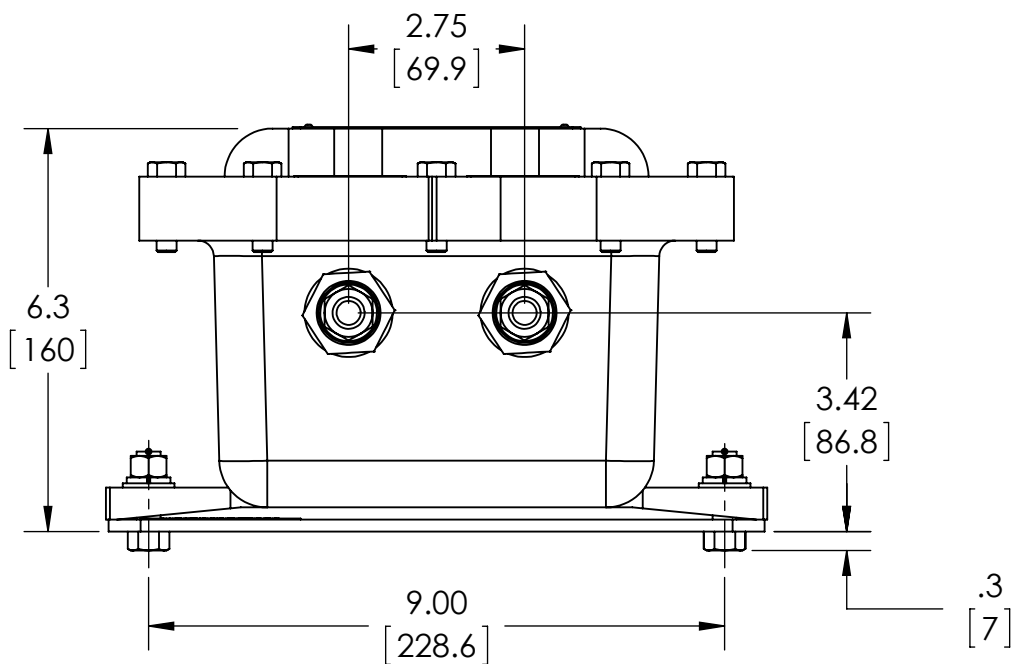
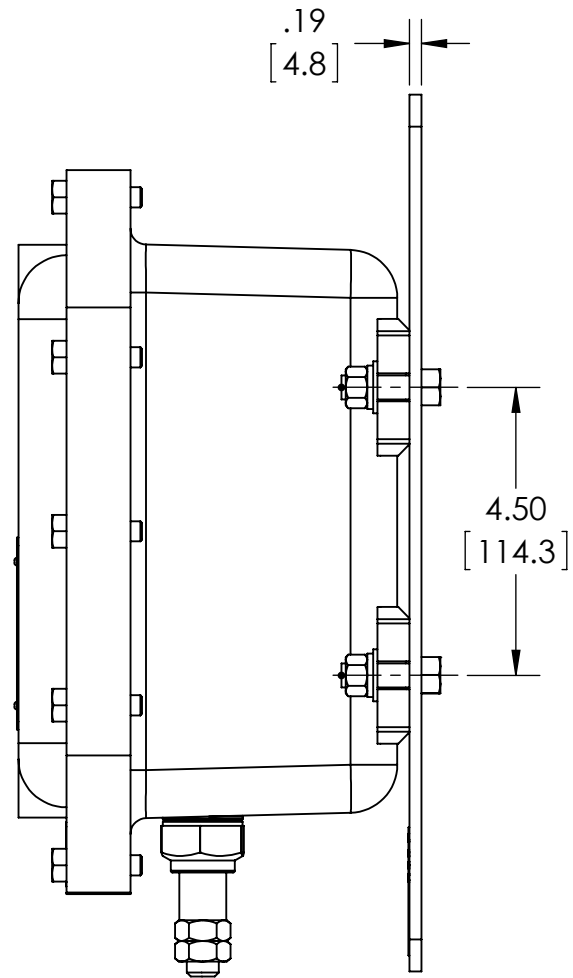
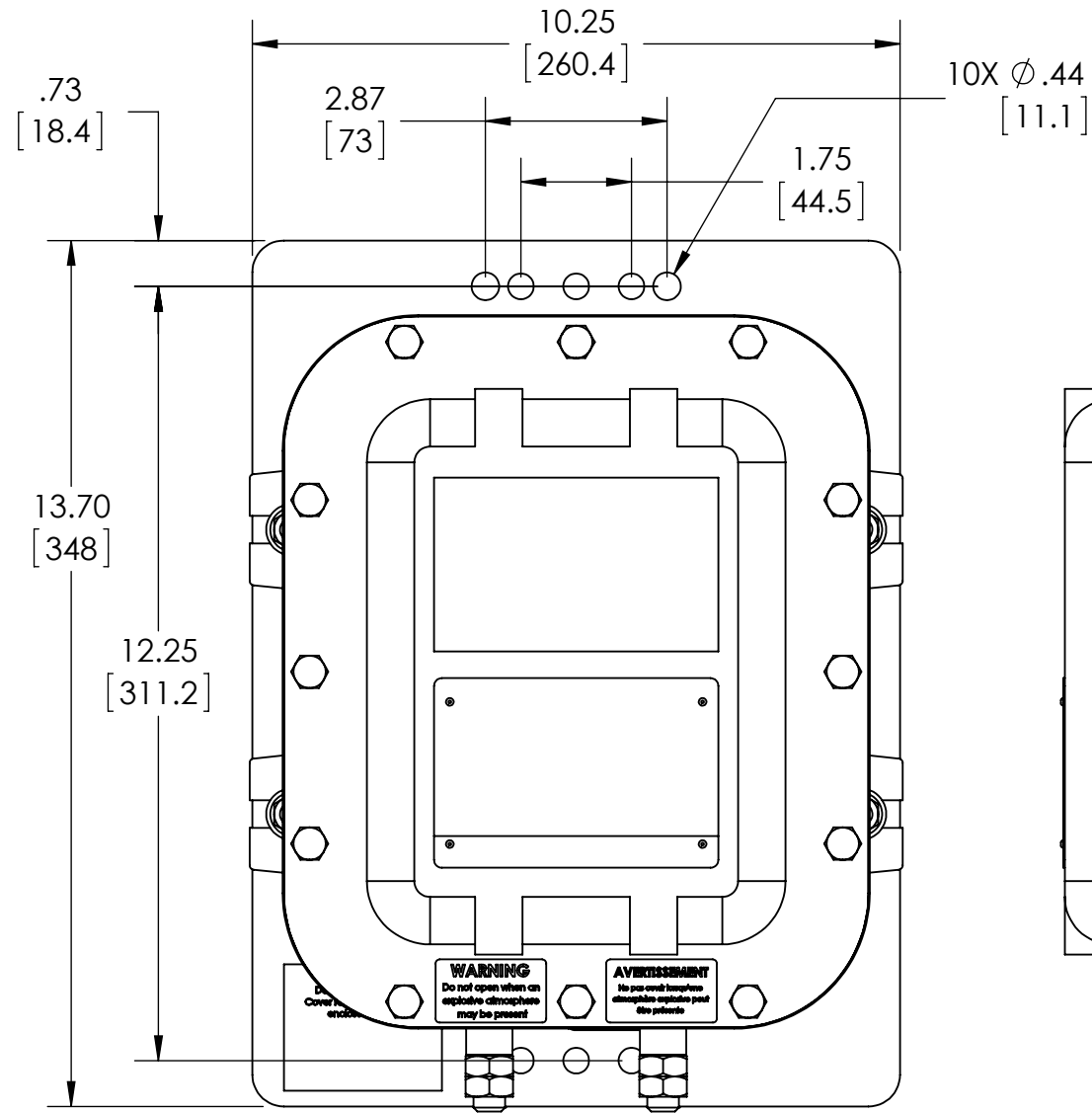
3. After installation, the DC voltage across the PCRH terminals can be measured to confirm that the expected value of cathodic protection voltage exists, assuming the cathodic protection system is ON. (The voltage measured with a voltmeter will be less than the actual cathodic protection voltage because it is not being measured with respect to a reference cell.)

4. After installation, the steady-state AC current through the PCRH conductors can again be measured. The current measured should be comparable to the value measured prior to installation since the AC impedance of the PCRH is negligible (i.e., about 10 milliohms at 60 Hz).

5. To verify correct device operation while in service, measure the pipe to soil voltage using a reference cell. An acceptable CP reading will indirectly indicate correct operation with DC isolation, as device conduction would bond the CP system to ground (or to the other connected structure) and affect the CP reading. While an indirect test, it has proven to be a good indicator of operation. An unacceptable reading may be due to other factors besides the Dairyland device, and if needed perform the following additional tests.

6. The definitive test is one performed with the device out of circuit. If the device is in service, disconnect the CP structure attachment conductor (typically at the negative terminal) so that the product is isolated, but first addressing any safety issues such as adding a current-rated bonding jumper between the two connection points, wearing insulating gloves, etc. Note that if the Dairyland device is performing mitigation of induced AC voltage, disconnecting the device will leave the structure as an open circuit, and the induced voltage on the pipeline may rise to high levels. Therefore, take appropriate safety measures before proceeding. Next, momentarily short the device terminals to remove any residual charge that may be on the internal capacitor. Connect a multi-meter, set to the lowest Ohms scale, across the terminals. If the product is functional, the resistance will start at zero ohms and then very slowly increase as the capacitor in the decoupler begins to charge from the multi-meter. The test may be discontinued at this point, as charging the capacitor can take up to 10 minutes, and it is only necessary to observe this general response briefly. If the product is failed, the reading will remain fixed and at a very low resistance value, typically a fraction of one Ohm.

If any measurements do not produce the expected results, contact Dairyland.



ANSI Y14.5M 1994 APPLIES

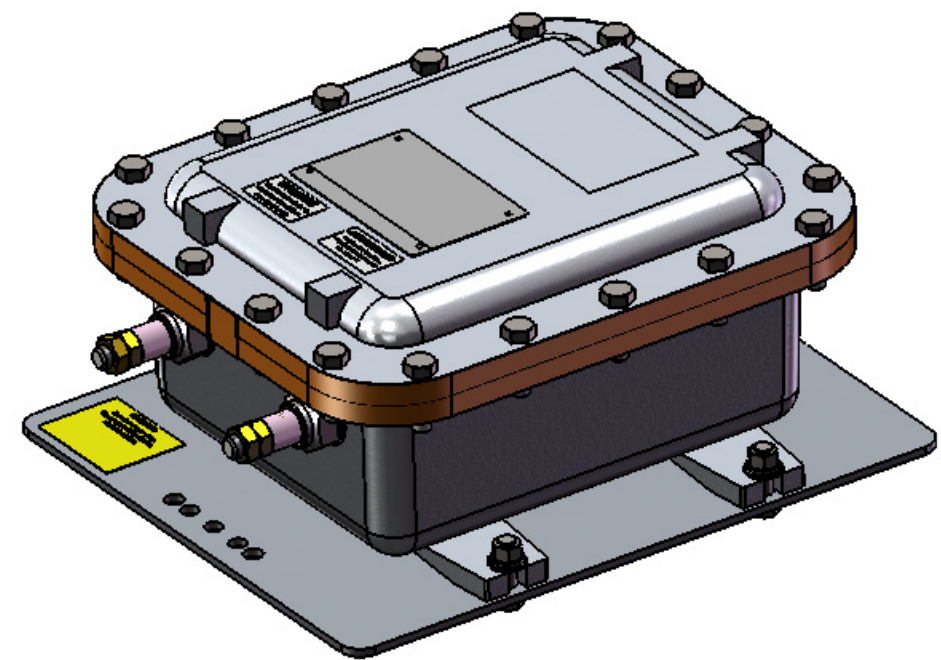
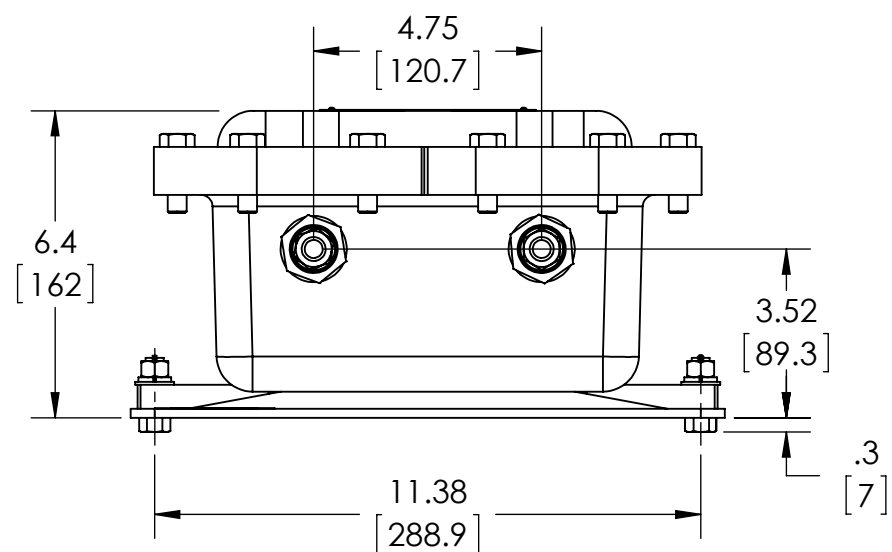
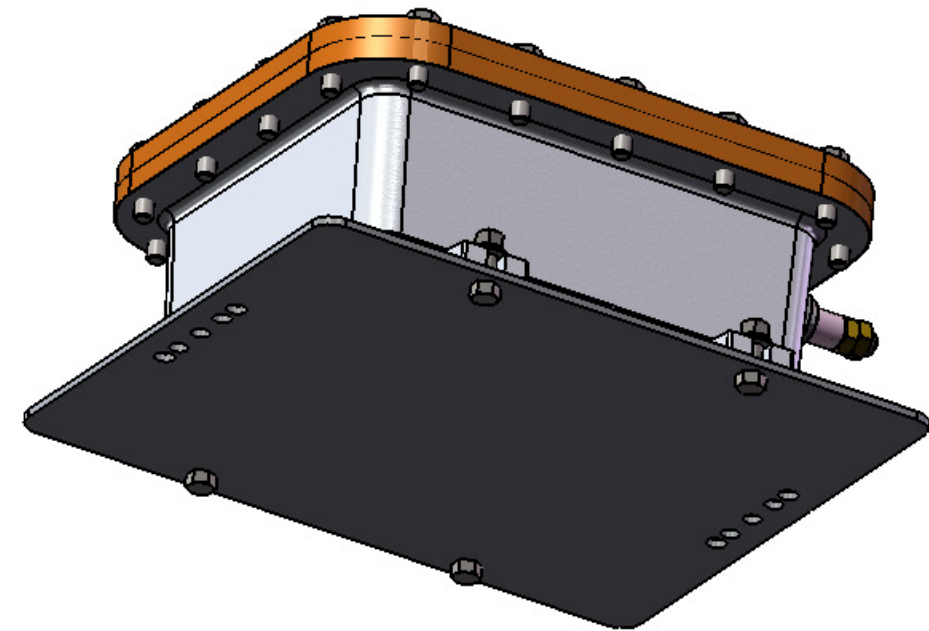
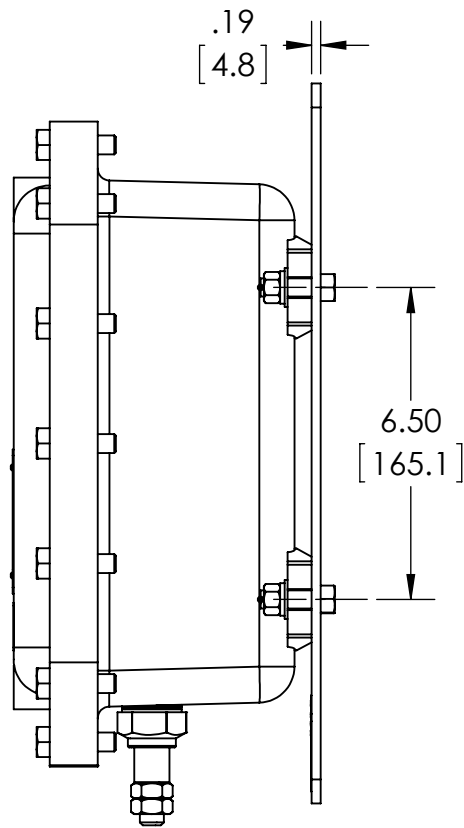
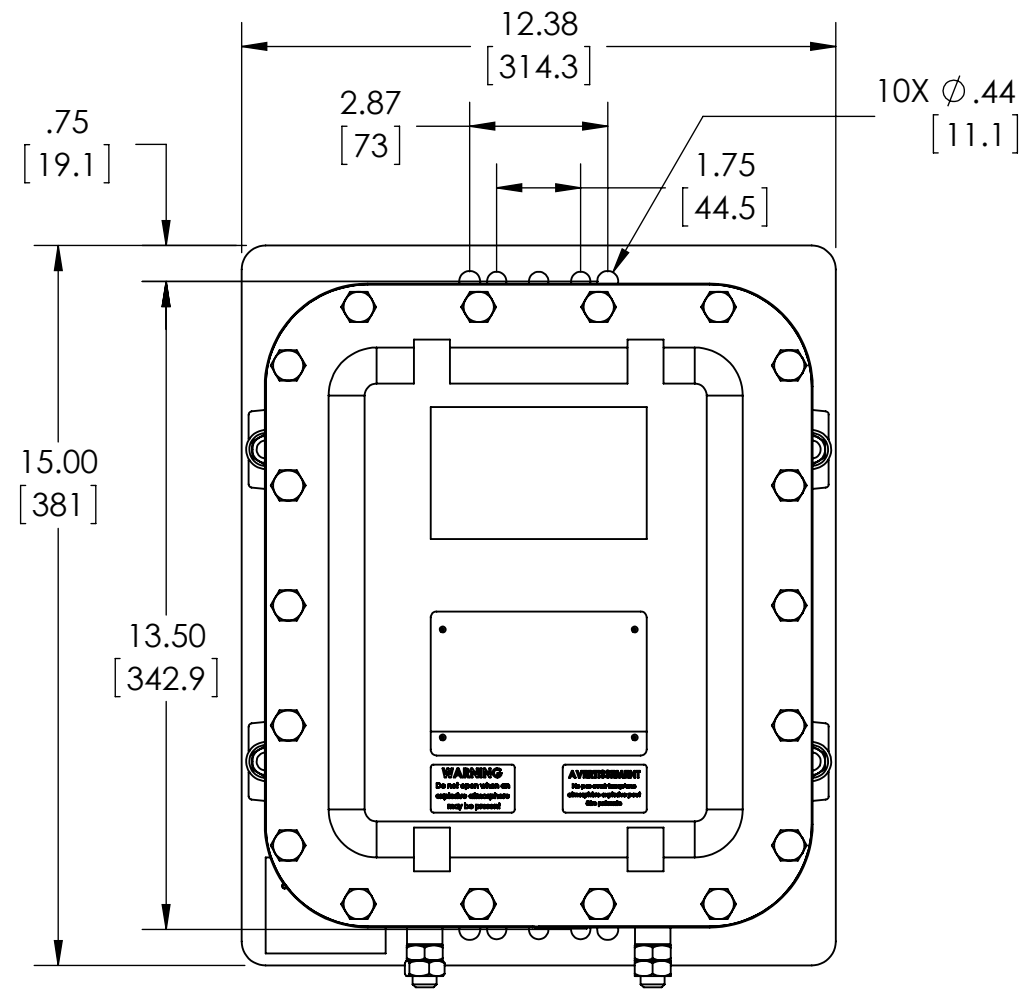
UNLESS NOTED
UNITS: INCHES
3-PLACE: \pm .005
2-PLACE: \pm .015
1-PLACE / FRAC: \pm .03
ANGULAR: \pm 1



**DAIRYLAND
ELECTRICAL
INDUSTRIES, INC.**

P.O. BOX 187
STOUGHTON,
WI 53589
608-877-9900
DAIRYLAND.COM

DESCRIPTION PCRH - 3.7KA THRU 10KA OUTLINE DRAWING				
DOCUMENT # 100089	REV A	DATE DRAWN 2015-08-18	DWG SIZE B	DATE APPROVAL 2015-08-18
SCALE 1:3	DRAWN: JPW	SHEET: 1 OF 1	DWG APPROVAL: TC	



ANSI Y14.5M 1994 APPLIES
 UNLESS NOTED
 UNITS: INCHES
 3-PLACE: ±.005
 2-PLACE: ±.015
 1-PLACE / FRAC: ±.03
 ANGULAR: ±1



**DAIRYLAND
 ELECTRICAL
 INDUSTRIES, INC.**
 P.O. BOX 187
 STOUGHTON,
 WI 53589
 608-877-9900
 DAIRYLAND.COM

DESCRIPTION
PCRH - 15KA OUTLINE DRAWING

DOCUMENT #	REV	DATE DRAWN	DWG SIZE	DATE APPROVAL
100090	A	2015-08-19	B	2015-08-19
SCALE 1:4	DRAWN: JPW	SHEET: 1 OF 1	DWG APPROVAL: TC	